

# Label Printer Support in ChipCharger

ChipCharger ver. 1.57 and above can print labels upon a successful recharge or verification of a chip. We recommend Brother QL-570 printer that has a built-in cutter.

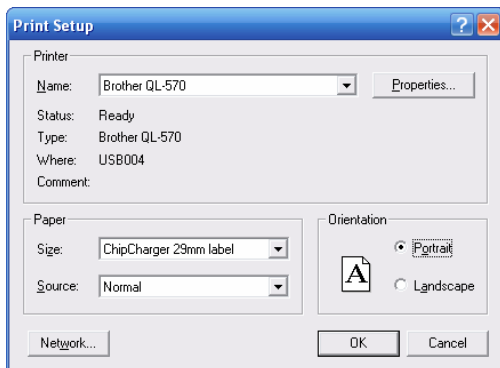


1. Install original driver that comes with the QL-570 printer.
2. Load continuous length label paper into the printer. We recommend using 29mm (1-1/7") label paper, Brother part number DK-2210.
3. Run ChipCharger. Go to menu **Label printing** and enable **Print label on recharge** and **Print label on verify**.
4. Go to **Label printing – Template**. This lets you select the template file. The files should be located in the default folder for ChipCharger, such as Program Files – ChipCharger. Choose:

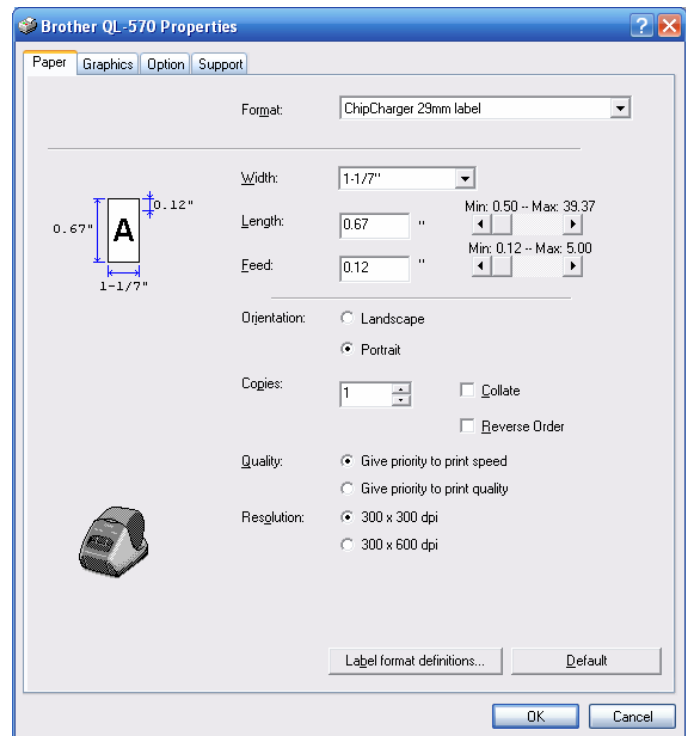
*29mm label.txt* - for 29mm paper

*62mm label.txt* - for 62mm paper

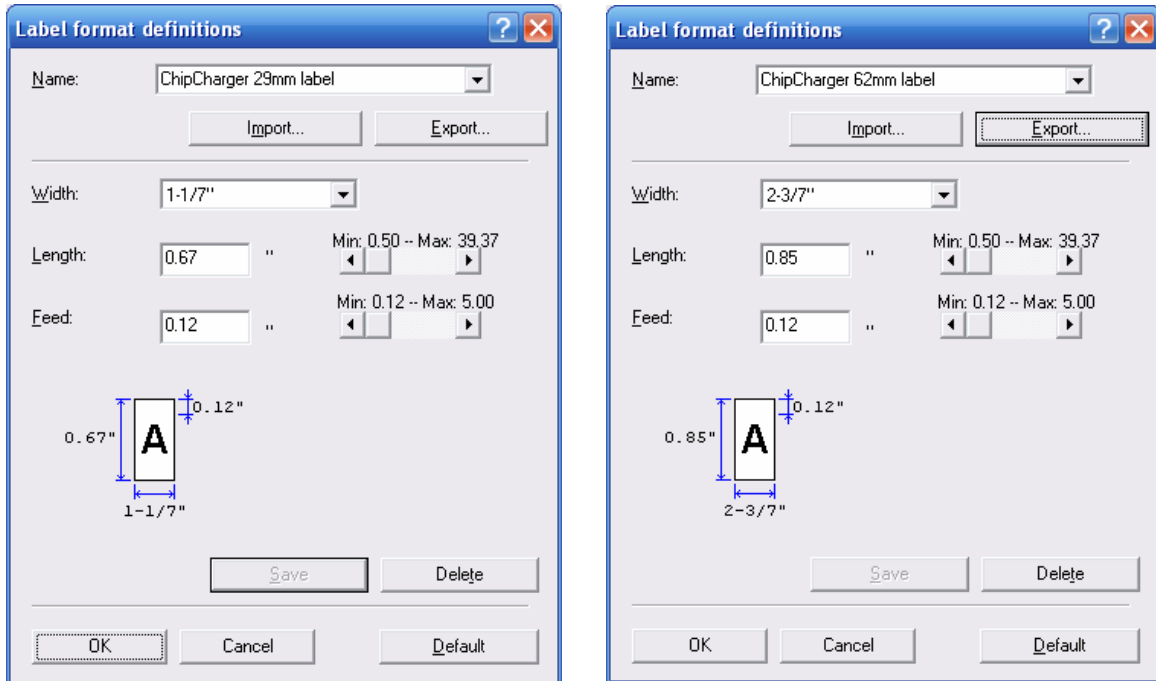
5. Go to **Label printing – Printer setup**.



6. Click **Properties**.



7. Click **Label format definitions**.



8. Click **Import** and select the file *ChipCharger 29mm label.org*

9. If the name *ChipCharger 29mm label* doesn't appear in Name list, you will have to copy the settings from the picture above. The printer driver has a bug. When you entered the settings, type the name *ChipCharger 29mm label* and click Save. Click OK.

10. In **Brother QL-570 properties** window – **Format**, select *ChipCharger 29mm label*. Make sure all settings match the ones on the picture above. Click OK.

11. Click OK until the Printer properties window is closed.

Now your ChipCharger will print labels when you recharge or verify a chip.

Notes:

- Label will not be printed if the recharge was unsuccessful.
- Chip will fail verification if it's been inserted in a printer prior to verification. This doesn't mean, however, that the chip won't work. Verification is your guarantee that a chip has a full ink level on it.
- It is strongly recommended to verify each chip after it's been installed on a cartridge. This will ensure the chip will work on a printer and will eliminate any mistakes, such as wrong color or ink type. Apply the sticker to the cartridge as a record of Quality Control.