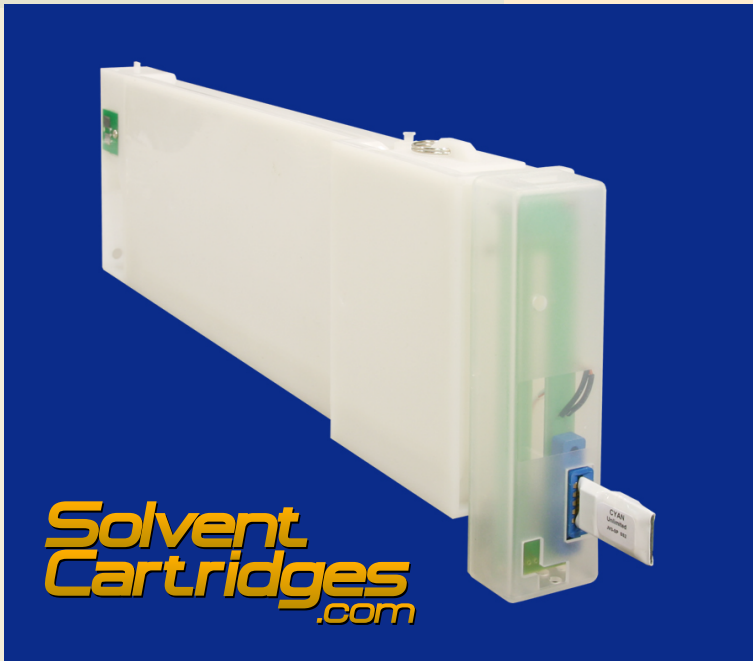


Multi-Liter JV3 Ink Chip



Lite-S cartridge with a Multi-Liter Chip.



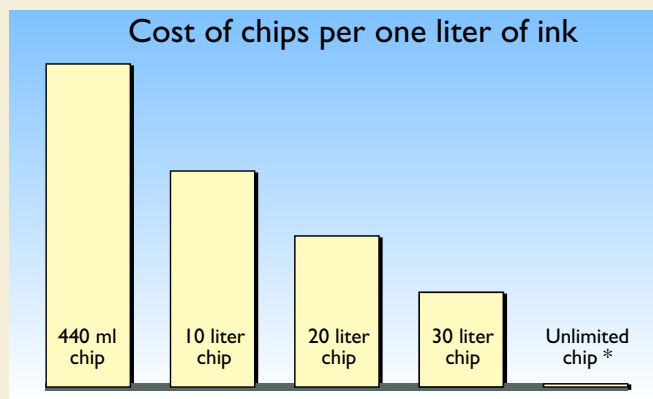
Lite-S Plus cartridge with a Multi-Liter Chip.

Connect and Forget

Introducing the new **Multi-Liter** ink chip for Mimaki JV3 that will last several liters of ink. This chip can be installed on a JV3 in seconds and will not need to be removed until the given amount of ink has been used by your printer. *Connect it and forget it.*

Features:

- Works with JV3 firmware 7.10.
- Plug and Play operation. No maintenance. Very easy and quick installation. No recharging is required.
- Lowers your running cost by eliminating the disposable chips.
- Allows an uninterrupted production.
- Eliminates the risk of running out of disposable chips.
- Gives you independence from the chips supplier and gives you freedom to choose any ink for your printer.



*With an Unlimited Chip, the cost of chip per liter is close to zero.

Multi-Liter Chip can be connected to our standard Lite-S cartridges and to any Lite-S and Pro-S bulk system. To prevent occasional removal or damage of the chip, we made a new cartridge called **Lite-S Plus**, that has a connector for a chip inside the plastic enclosure. The cover will protect the chip.

Multi-Liter Chips are available for 10, 20 and 30 liters of ink, and also **unlimited**. Unlimited, or **Perpetual Chip**, is programmed to continue generating codes indefinitely long.

How It Works

Multi-Liter Chip is in fact a sophisticated electronic device with a microprocessor that fully simulates the work of the OEM Mimaki ink chip. It responds the same way to all requests from the printer; it accepts writing commands and will store the memory. There is absolutely no way the printer will tell the difference between our Multi-Liter Chip and the OEM chip. Being similar to our rechargeable chips, this one has a major difference: it does not require recharging, therefore it can stay on a printer until the required number of ink has been consumed. You don't need a ChipCharger or the Internet connection. One Multi-Liter chip is equivalent to a number of disposable 440ml chips. For example, a 10-liter chip will be able to simulate 25 disposable chips. It will use a new code every time the ink counter on a JV3 drops to "1". Next thing you're going to see is that the ink level has been restored to "9" (max). You also have an option to force the use of the new code if, for example, you are about to run a big print job and want to make sure to have enough "ink level".

Multi-Liter JV3 Chip